



**LIVE UNITED<sup>®</sup>**  
 These are the faces of change. Every day, our donors, advocates, and volunteers are making a lasting difference in our community. We all have a stake in each other's success.

# 2021 COMMUNITY IMPACT REPORT



THANK YOU TO OUR PRINT SPONSOR



Greater Milwaukee & Waukesha County



# UNITED WE WIN

## HOPE.

Since March of 2020, the word hope has been on all of our minds. We were hopeful for the health and safety of our family and friends. We were hopeful for our medical professionals, giving and risking so much to serve so many in our community. We were hopeful for an end to this once in a generation pandemic.

For many, it's the hope for a more equitable and inclusive society. It's the hope that everyone can live a life filled with dignity and respect. It's the hope that we open new doors and remove the barriers that prevent so many from fulfilling their dreams.

While today we see hope ahead of us, we know that COVID-19's damage will take years to overcome.

United Way is ready. United Way is committed to ensuring communities become stronger, more inclusive, and more sustainable as they recover. Together, we are reimagining and rebuilding our neighborhoods as strong, resilient places where everyone can thrive.

## GIVE

United Way connects those in need to those who can help. The Community Fund is at the heart of our work.



**You + Local Nonprofit Partners = United Community**

Here's why:

**You.** When you give to the Community Fund, your donation is combined with thousands of other donors, funding over 220 programs that have a direct impact on the health, education, and financial stability of so many in our neighborhoods.

**Local Nonprofit Partners.** United Way knows the nonprofit agencies who are doing the hard work every single day, offering support to those who may be struggling. Your donation directly supports this work.

**United Community.** The solutions we create together go beyond short-term fixes. We are creating lasting change.

### Change doesn't happen alone.



Psychotherapist Mandi Degner helps individuals and families nurture their mental health at Health Improvement Fund partner Advocate Aurora Walker's Point Community Clinic.



Maudwella Kirkendoll helps families navigate housing challenges at Safe & Stable Homes partner Community Advocates, which served 4,000+ households last year.



Reyna and Victor found themselves out of work because of COVID-19. United Way partner Catholic Charities helped them make it through.





In the spring of 2021, 187 corporate, community, and individual volunteers joined United Way to assist FEMA and the City of Milwaukee Health Department with the state's largest vaccination clinic at the Wisconsin Center. Volunteers stepped up to provide 1,236 hours of assistance to ensure our community remains as healthy as possible.

## ADVOCATE

Creating lasting change in our community sometimes requires changes in public policy. Advocating starts with educating policy makers about the importance of issues in our community, then engaging them to be part of the conversation. Our policy priorities are nonpartisan, grounded in research and evidence-based principles, and support long-term solutions to local challenges.

## VOLUNTEER

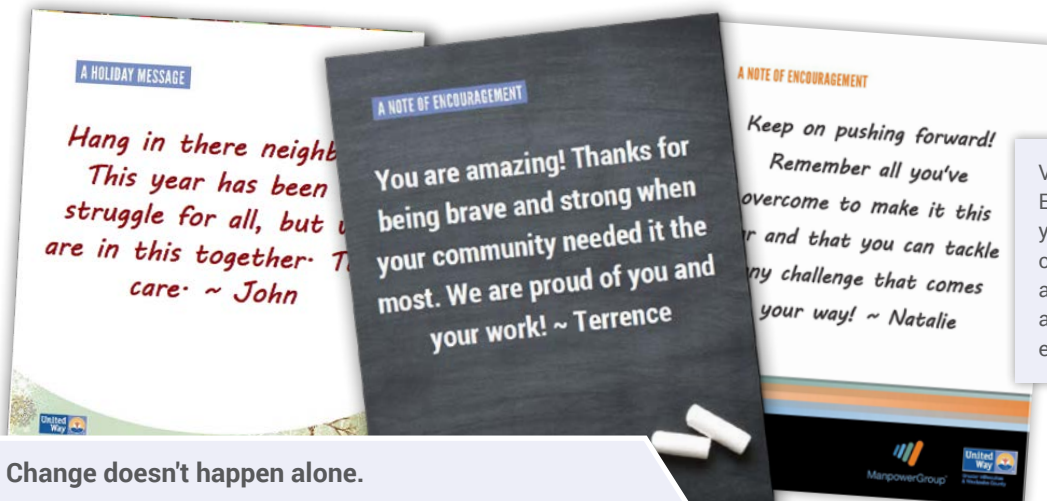
United Way's annual Seasons of Caring connects thousands of volunteers to meaningful experiences across our region. Last year, we created 6,159 individual volunteer experiences and 306 groups volunteered in our community.



**43,914**  
total volunteer  
hours



**\$1,194,456**  
total value  
of volunteer time



Volunteers wrote Notes of Encouragement throughout the year. Recipients included health care workers, local students and teachers, job seekers, and individuals and families experiencing homelessness.

Change doesn't happen alone.



Volunteers assembled 12,000 sets of flash cards for students, sponsored by Northwestern Mutual and 5,000 sets of Uplifting Impact's "How to Start Talking About Race" conversation cards, sponsored by Rockwell Automation.



Launched in April 2021, United Way's Diaper Bank has already collected over 96,000 diapers for local families.



United Way, ManpowerGroup, and Goodwill Industries partnered for a virtual job seminar series to help job seekers, which included special guest, Donald Driver.

# YOUR INVESTMENT CHANGES LIVES

Every day, our donors, advocates, and volunteers are making a lasting difference in so many ways. We measure our success in lives changed. And during these challenging times, we still did some amazing things. And we did it together.

## Last year:

- 72,475 youth and adults had increased access to health care programs, health and wellness services, and safer and healthier communities.
- 93% of surveyed children who participated in United Way-funded early childhood education programs showed improvement in cognitive skills and 90% showed improvement in communication skills.
- 37,433 adults and families benefited from programs that reduced barriers to employment and provided safe and stable homes.

United Way also helps increase the capacity and efficiency of our program partners through technical assistance and training, as well as connecting them to volunteers and other resources.

# 193,389

people served by United

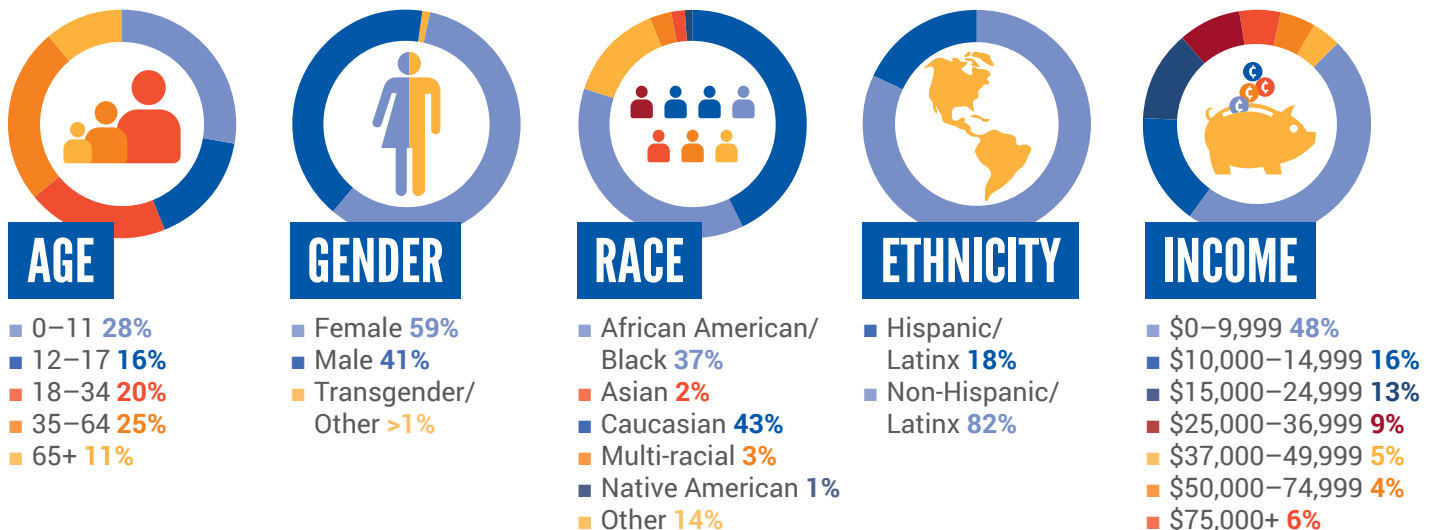
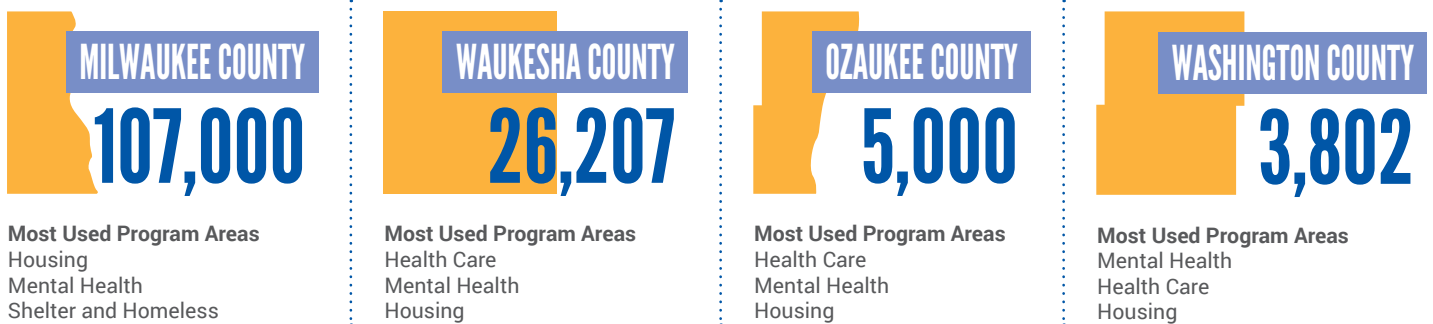
Way-funded programs

& partnerships across

our community last year.\*

## PEOPLE SERVED IN OUR FOUR-COUNTY AREA

\*51,380 individuals were served in our community who did not provide a ZIP code at intake or identified as homeless. An additional 299,163 were served by IMPACT 2-1-1.



# STRENGTHENING OUR EFFORTS

United Way is focused on the issues that affect so many today, but we are also expanding our vision to look toward tomorrow. Here is some of the work underway that will strengthen our efforts and multiply and accelerate our impact throughout our four-county area.

## Racial Equity Portfolio

At United Way, we believe in racial equity. We believe in building a community that offers access, resources, and the opportunity for long-term success. We believe in leading the fight to create communities where everyone can thrive.

This new portfolio is focused on a commitment to deepen our impact as funders, partners, and conveners, especially as related to racial equity and social justice.

**Our goal is to increase funding to Black and Brown-led organizations and advocate and support Black and Brown-led ideas.**

We know that we will do this better side-by-side with the community. We have formed an advisory committee focused specifically on racial equity and justice. Members will represent the communities that we seek to support through our investments.

Together, we will commit to dismantle systemic inequities by building capacity of Black and Brown-led organizations to identify and address Black and Brown defined priorities.



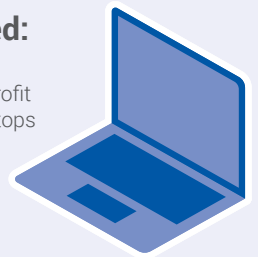
## TECHQUITY

Techquity is a collective impact initiative of United Way, with a clear goal: bridge the digital divide by fostering digital equity and inclusion throughout our community. Techquity connects stakeholders from business, government, education, and social sectors to promote digital equity and inclusion via four core strategies:

- **Access:** Ensuring all members of our community have access to affordable, reliable broadband internet connection.
- **Devices:** Meeting the community's needs for digital devices required to be healthy and successful at work, school, home, and in the community at large.
- **Skills:** Equipping our community with the necessary digital skills, literacy, and vocational opportunities to participate and excel in the digital economy.
- **Advocacy:** Using our collective voice to fight for the digital equity and inclusion of every member of our community.

### To date, Techquity has funded:

**Hundreds of laptops** for nonprofit agency partners, including laptops for students at 12 Milwaukee Community Schools



**Tens of thousands of dollars** in Techquity Digital Devices & Skills Grant awards to nonprofits

**Hundreds of wifi hotspots**, including hotspot and phone data plans



**150+ smartphones** for community members seeking employment and/or housing



# EQUITY & INCLUSION

At United Way, we strive to create communities where systemic barriers no longer hold people back from achieving their potential, and where every person has the resources and support that they need to fulfill that promise.

*We believe in opportunities for boys and men of color to thrive.*

## Boys & Men of Color

This portfolio cultivates partnerships that support opportunities, increased access, and culturally responsive resources for boys and men of color across class, gender identity/expression, religion, and sexuality.

This portfolio supports a variety of service providers incorporating equitable strategies specific to males of color in the community. The goal of this work is systematic change, rather than quick-fixes or band-aid solutions. The focus is on:

- Fostering opportunities for cross-sector partnerships.
- Increasing access to emotional well-being services.
- Providing resources for mentoring, job readiness, civic engagement, and sustainable skill development.

*We believe that everyone deserves permanent employment with a livable wage.*

## Diversity Leadership Society

This is a diverse group of individuals that are working to ensure every family in the counties of Milwaukee, Ozaukee, Waukesha, and Washington has the opportunity to flourish, no matter their gender, age, ethnicity, and geography. Their signature initiative is Reducing Barriers to Employment & Advancement.

*We believe in building authentic relationships across our community, for a better, stronger, more inclusive Milwaukee.*

## Partnership MKE



MILWAUKEE  
JEWISH FEDERATION

A collaboration with the Milwaukee Jewish Federation, this initiative aims to break down barriers and destroy bias by pairing individual community leaders across lines of difference. Through a focus on cohesion, inclusion, and overcoming divisions, Partnership MKE aims to build social capital and spur critical conversations about bias among our community's leadership.

*We believe in supporting and nurturing future leaders who are ready to serve.*

## Project LEAD

This in-depth training program prepares community members for leadership roles on nonprofit boards and committees, with an emphasis on recruiting participants from underrepresented board populations (including young people, women, and racially and ethnically diverse professionals).

*We believe in the development of young men who are not only well-educated, but provide servant leadership that will be emulated by others.*

## MKE Fellows

The primary goal of MKE Fellows is the creation of a strong pipeline of young, African American male college graduates ready to return to Wisconsin to excel in their careers, build wealth, and become engaged leaders. We are proud to be part of the national expansion of this initiative with a goal of supporting 25,000 young men, particularly young Black men, to successfully complete college over the next 10 years.

**"The MKE Fellows has given me opportunities like no other program that I have been a part of. In three years, I have had the chance to work for three amazing companies in the Milwaukee area, gain insights from seasoned and well-respected professionals, and become part of a brotherhood of like-minded young men who are all striving to create a lasting impact on Milwaukee."**

Miles Sigh



Reducing Barriers to Employment partner Employ Milwaukee helped Leon navigate his options for becoming a truck driver; now, he's planning for a successful future.



# REDUCING BARRIERS TO EMPLOYMENT & ADVANCEMENT

## Give to the root and you'll nourish all the branches.

Led by United Way's Diversity Leadership Society, this initiative is anchored in the belief that all adults of working age should have the opportunity to obtain permanent employment with a livable wage at a workplace where they are treated with dignity and have opportunities for advancement. This helps families create safer, more stable, and healthier homes.

In the second quarter of 2021, the Black unemployment rate in the US was 9.2% as compared to the white unemployment rate of 5.1%. Together we can get to the root of that problem.

It starts with systemic change. To dismantle systemic inequities means we change those systems that are not working. It means we invest in people in order to produce better outcomes.

This multi-faceted approach focuses on:

- **Education, training, and credentials:** Supporting programs that help adults obtain their GED, learn a new skill or trade, or earn a new certification.
- **Transportation:** Supporting programs that provide innovative transportation solutions and/or assist with driver's license recovery.
- **Involvement in the justice system:** Advocating for policy change that assists individuals who were involved in the justice system, with a focus on strengthening workplace re-entry.
- **Diverse talent retention:** Collaborating and advancing equitable evaluation to retain diverse talent in Wisconsin.

## 2021-22 Grantees

- Employ Milwaukee, Inc.
- Independence First, Inc.
- Literacy Services of Wisconsin, Inc.
- Metro GO, Inc DBA Regional Transit Leadership Council
- Milwaukee Community Business Collaborative, Inc. (DBA Milwaukee JobsWork)
- The Mindful Group
- Wisconsin Regional Training Program (WRTP)

Our region has a significant misalignment between where many jobs are and where job seekers are located. Many jobs, especially in manufacturing, are located in the suburbs, and many job seekers are downtown. Roughly 20% of Milwaukee residents don't have a car, and transportation to these jobs may require a 90 minute bus ride.



Mercedez was living in a dangerous home that her landlord wouldn't fix. Safe & Stable Homes partner Legal Aid Society helped her find safe housing.

# SAFE & STABLE HOMES: ENDING FAMILY HOMELESSNESS

## United Way has set a goal: end family homelessness by 2023.

Safe & Stable Homes is led by an advisory council of parents that have experienced homelessness and leaders in local government, public policy, legal, education, health, and housing sectors. Our results are measured in accordance with the U.S. Interagency Council on Homelessness.

### We are on track to being the first place in the nation to end family homelessness.

Our prevention-focused priorities are: free mediation and legal aid for families facing eviction cases; emergency financial assistance and wraparound supportive services for families at risk of eviction or foreclosure; and staffing the new Milwaukee Rental Housing Resource Center, which serves as a central point of access to resources for landlords and tenants when eviction is being considered.


### Changing the System


- **Right to Counsel.** Everyone deserves a fair trial in their eviction case. 90% of cases with legal representation result in the eviction being dismissed/delayed, but less than 3% of local tenants can afford a lawyer. We have worked with the courts & government to provide a housing attorney for every tenant under 200% of the federal poverty guideline.
- **Family Flex Fund.** Families that are at imminent risk of homelessness are provided tiered financial assistance and case management to stabilize their housing. This takes pressure off crisis service providers, prevents the trauma of homelessness for children, and increases dignity for parents that need a boost of support to get back on their feet. We expect 200 families to be supported by the Family Flex Fund this year. This will dramatically reduce the number of families needing emergency shelter.

### 2021-22 Grantees

- Advocates of Ozaukee, Inc.
- Cathedral Center
- Community Advocates
- Family Promise of Ozaukee County
- Family Promise of Waukesha County
- FRIENDS, Inc.
- Heartland Alliance Housing
- Hope House
- Impact, Inc.
- Legal Action of Wisconsin
- Legal Aid Society of Milwaukee
- Mediate Wisconsin
- Milwaukee Habitat for Humanity
- Outreach Community Health Centers Inc.
- Pathfinders
- The Salvation Army – Wisconsin & Upper Michigan
- United Methodist's Children's Services of WI, Inc.
- Wisconsin Veteran's Network, Inc. (VetsNet)

### In 2020, thanks to the community's generous support:

 **Nearly 5,600 families** accessed services such as rent assistance, rapid rehousing, legal representation in eviction court, and more.

 **Over 28,800 calls** were made to the Rental Housing Resource Center, a new collaborative project designed to prevent evictions.





# MILWAUKEE COMMUNITY SCHOOLS PARTNERSHIP

As a community school coordinator for Longfellow Elementary supported by United Way and Journey House, Nora breaks barriers and plants seeds of hope for local students.

Community Schools use practices of shared leadership, equity, and cultural relevance to transform schools into places where students, families, staff, and the local community work together to ensure every student is successful.

## The Community Schools strategy

- **Engage:** A full-time community school coordinator increases capacity of the school to engage multiple stakeholders including community partners, families, staff, students, and neighborhood residents.
- **Aspire:** Schools collectively identify school and community aspirations and barriers to success by collecting diverse knowledge through community conversations and quantitative data.
- **Prioritize:** A site-based community school leadership team analyzes data, develops a shared vision, key priorities and strategic plan through local decision making.
- **Align:** Community partnerships, initiatives, and policies are developed and/or aligned to support a shared vision and key priorities reflected in the school improvement plan to ensure collaboration and collective action.

## 2021-22 Priorities

- Milwaukee Community Schools Partnership (MCSP) received the highly competitive Department of Education Full-Service Community Schools award. The five year, \$2.5 million grant will allow us to strengthen current practices, including creating schools that strive towards shared leadership, equity and opportunity, and a focus on culturally responsive and restorative practices. This will also expand our strategies to include an increased focus on early childhood, health and wellness, and housing.
- MCSP will increase support to continue to provide professional learning communities on anti-racist practices for Community School educators.
- MCSP will launch a series of expanded integrated student support this year, including, early childhood connections, housing stability, coordinated health, and college and career readiness.

## Current Schools

In partnership with Milwaukee Public Schools and local agencies (listed below), United Way is working with the following schools:

- **Auer Avenue Community School**  
(Milwaukee Urban League)
- **Bradley Tech High School**  
(Milwaukee Christian Center)
- **Browning Elementary**  
(Silver Spring Neighborhood Center)
- **Dr. Martin Luther King, Jr. Elementary School**  
(TBD)
- **Grantosa Drive School**  
(TBD)
- **Hopkins Lloyd Community School**  
(Walnut Way)
- **James Madison Academic Campus**  
(YWCA Southeast WI)
- **Lincoln Avenue School**  
(Sixteenth Street Community Health Center)
- **Longfellow School**  
(Journey House)
- **Mitchell School**  
(TBD)
- **North Division High School**  
(Milwaukee Urban League)
- **South Division High School**  
(Sixteenth Street Community Health Center)
- **Washington High School**  
(Social Development Commission)
- **Westside Academy**  
(Froedtert & the Medical College of Wisconsin)
- **Zablocki Elementary**  
(Sixteenth Street Community Health Center)

# 2021-22 INVESTMENTS IN HEALTH

## GIVE ACCESS TO HEALTHCARE

Removing barriers to ensure all youth and adults have access to quality and affordable healthcare.

### Strategic Program Grants

Ascension Seton Dental Clinic – Healthy Teeth for Children, Restorative Care Program  
Aurora at Home – Aurora at Home Health, Aurora Zilber Family Hospice  
Aurora Family Service, Inc. – Milwaukee Mental Health Consultants, Systemic Family Counseling  
Aurora Healing Center on Bruce Street – Counseling Program for Underserved Survivors of Sexual Assault  
Bread of Healing, Inc. – Community Med Share  
Catholic Charities of the Archdiocese of Milwaukee, Inc. – Behavioral Health Services, Pregnancy and Parenting Support-Milwaukee, Outreach & Case Management  
Children's Wisconsin – Counseling for Children and Families, Milwaukee Start Right  
Community Outpatient Health Service – Community Outreach Health Clinic  
Community Smiles Dental – Adult Dental Care Program

Easterseals Southeast Wisconsin – Childbirth & Infant Preparation Services (SBHF)  
Family Service of Waukesha, Inc. – Mental Health Counseling  
Jewish Family Services, Inc. – Individual & Family Counseling  
Mental Health America of Wisconsin, Inc. – Mental Health Advancement  
Ozaukee Family Services – Counseling Services  
Pathfinders – Clinical Services  
Penfield Children's Center – Behavioral Health Clinic  
Sixteenth Street Community Health Center, Inc. – The Great Start Program  
Vivent Health – Dental Clinic  
Waukesha Free Clinic – St. Joseph's Medical Clinic  
Wisconsin Community Services, Inc. – Criminal Justice Recovery Services  
Women's Center, Inc., The – Sexual Abuse & Assault Counseling

## GIVE HEALTH & WELLNESS

Supporting youth and adults of all ages and abilities to ensure everyone has the opportunity to live with independence and dignity.

### Strategic Program Grants

Adaptive Community Approach Program, Inc. (ACAP) – Community Orienteering  
Curative Care Network, Inc. – Adult Day Services  
Eras Senior Network, Inc. – Faith in Action, Neighborhood Outreach Project

Harry & Rose Samson Family Jewish Community Center – Older Adult Seniors, School Aged Special Needs-Shiluv, Special Needs-Chaverim  
IndependenceFirst, Inc. – Attendant Referral Program  
Jewish Family Services, Inc. – Case Management  
Milwaukee Christian Center, Inc. – Older Adult Center

Penfield Children's Center – Early Intervention/Parent Program  
United Community Center, Inc – Elderly Program  
Vision Forward Association – Children's Services  
YMCA at Pabst Farms – Special Programs

## GIVE SAFE & HEALTHY COMMUNITIES

Transforming communities through education and access to support, making healthy choices easy, safe, and affordable.

### Strategic Program Grants

Centro Legal – Domestic Abuse and Family Law Program  
Diverse and Resilient, Inc. – End HIV  
Family Service of Waukesha, Inc. – Center for the Prevention of Family Violence  
IMPACT, Inc. – IMPACT 2-1-1  
Meta House, Inc. – Transitional Living  
Milwaukee Women's Center, Inc., The – Nevermore Batterers Treatment  
Sojourner Family Peace Center, Inc. – Courthouse Advocacy  
Vivent Health – Lifepoint

### Initiatives We Lead

**Healthy Youth Initiative**  
Reduces teen pregnancy, sexual violence, and victimization for young people of all genders.

**Teen Pregnancy Prevention Initiative**  
Improves the sexual and reproductive health of young people in Milwaukee.

**96%** of surveyed adults who participated in United Way-funded chemical abuse and dependency programs felt their mental health has improved.

# ADVOCATE

## Initiatives We Lead

### Health Improvement Fund

Increases coverage, access, care coordination, and community health in Milwaukee.

## Community Coalitions, Collaborations, & Partnerships

Community Schools: Coordinated Health Advisory Council  
IMPACT Connect - Board of Managers  
Milwaukee Coalition for Children's Mental Health  
Milwaukee Enrollment Network  
Milwaukee Evaluation!  
Milwaukee Health Care Partnership  
Milwaukee Mental Health Task Force  
MKE Civic Response Team: Medical Services/Clinics  
MKE Civic Response Team: Mental Health  
Waukesha County Breastfeeding Coalition

# VOLUNTEER

## Time & Talent Contributions



**Diaper Bank**



**New Parent Kits**



**Personal Care Kits**

# ADVOCATE

## Community Coalitions, Collaborations, & Partnerships

Milwaukee County Commission on Aging - Advisory Council  
Partners of Change  
MKE Civic Response Team: Leadership Council, Coordinating Committee  
United Way's Public Policy & Advocacy Committee  
Wisconsin Policy Forum Social Services Committee

# VOLUNTEER

## Time & Talent Contributions



**Snack Packs**



**Wellness Kits**

# ADVOCATE

## Community Coalitions, Collaborations, & Partnerships

American Evaluation Association  
Anti-Trafficking Coalition of Waukesha County  
BUILD: Sherman Park  
The Coalition on Lead Emergency (COLE)  
Community Indicators Consortium  
Convergence Human Trafficking- Employment Curriculum  
Denim Day Planning Committee  
Human Trafficking Task Force of Greater Milwaukee

Milwaukee Commission on Domestic Violence and Sexual Assault  
Milwaukee Fatherhood Initiative  
Teen Pregnancy Prevention Oversight Committee  
TPPI Adolescent Sexual and Reproductive Health sub-committee  
TPPI Sexual Violence Prevention Committee  
Waukesha Heroin Task Force  
Wisconsin Coalition Against Sexual Assault

# VOLUNTEER

## Time & Talent Contributions



**Fight The Flu Kits**



**Winter Care Kits**



# 2021-22 INVESTMENTS IN EDUCATION

## GIVE



## EARLY CHILDHOOD EDUCATION

Increasing the number of children who enter school ready to succeed.

### Strategic Program Grants

Boys & Girls Clubs of Greater Milwaukee – Early Literacy Program  
COA Youth & Family Centers – Early Childhood Education  
La Casa de Esperanza, Inc – Early Childhood Education  
La Causa, Inc. – Early Education and Care Center  
Neighborhood House of Milwaukee, Inc. – Early Childhood Education  
Next Door – Early Childhood Education

Silver Spring Neighborhood Center, Inc. – Elaine Schreiber Child Development Center  
St. Joseph Academy – Early Childhood Education Center  
United Community Center, Inc – Before & After School  
YMCA of Greater Waukesha County – Early Childhood Education  
YMCA of Metropolitan Milwaukee, Inc. – Early Childhood Education

**88%** of the surveyed children from United Way-funded early childhood education programs improved literacy skills.

## GIVE



## STRENGTHENING FAMILIES

Supporting success within the family unit and improving cognitive, social, and/or physical skills among children.

### Strategic Program Grants

Aurora Family Service, Inc. – Family Enrichment  
Bay View Community Center, Inc. – Family Learning & Engagement Lab  
Catholic Charities of the Archdiocese of Milwaukee, Inc. – Supported Parenting-Waukesha  
Children's Wisconsin – Volunteer Respite Care  
COA Youth & Family Centers – Home Instruction for Parents of Preschool Youngsters (HIPPY)  
Curative Care Network, Inc. – Children's Services  
Easterseals Southeast Wisconsin – Case Management (SBHF)

Family Service of Waukesha – C.A.R.E. Center, The HEAR Wisconsin, Inc. – Kellogg Child & Family Program  
La Causa, Inc. – Crisis Nursery and Respite Center  
New Concept Self Development Center Inc. – MLK Social Service  
Parenting Network, Inc., The – Parent Helpline, Parenting Education & Support Services  
Parents Place, Inc. – Community Education/Born Learning, Supervised Visitation  
Women's Center, Inc., The – Child Abuse Prevention

### Initiatives We Lead

**Build My Bookshelf - Waukesha**  
Improves literacy by helping children in high-need Waukesha County schools build their home libraries.

**Emerging Readers**  
Gives the gift of reading to local kids who are matched with United Way Emerging Leaders families who provide age-appropriate reading materials four times a year.

## GIVE



## YOUTH DEVELOPMENT

Building skills, resilience, and strong relationships for youth to thrive.

### Strategic Program Grants

Big Brothers Big Sisters of Metropolitan Milwaukee, Inc. – One to One Mentoring Program  
Big Brothers Big Sisters of Ozaukee County Inc. – MATCH ME  
Boy Scouts of America, Potawatomi Area Council – Cub Scouts  
Boys & Girls Clubs of Greater Milwaukee – Centralized Services, Sponsor-A-Scholar  
City Year, Inc. (Milwaukee) – Whole School Whole Child  
COA Youth & Family Centers – Youth & Family Program  
Girl Scouts of Wisconsin Southeast, Inc. – Leadership & Critical Life Skills Development for Girls  
GPS Education Partners, Inc. – Pathways to Employability  
La Casa de Esperanza, Inc – School Age Education Program  
Milwaukee Christian Center, Inc. – Youth Development Program  
Milwaukee LGBT Community Center – Project Q Health & Wellness

Milwaukee Urban League – Project Ready  
Neighborhood House of Milwaukee, Inc. – Youth Development Program  
Silver Spring Neighborhood Center, Inc. – Youth Social Development  
Three Harbors Council, Boy Scouts of America – Scouts BSA  
United Community Center, Inc – After School Achievement, Youth Empowered to Succeed  
Wisconsin Community Services, Inc. – Youth Enhanced Support (YES)  
YMCA of Greater Waukesha County – Day Camp  
YMCA of Metropolitan Milwaukee, Inc. – Day Camp

### Initiatives We Lead

**Anti-Bias Curriculum Grants**  
Small grants to K-12 teachers in support of anti-bias education in their classrooms.

**Community Schools**  
Transforms schools and communities to collectively ensure student success.

**Helping Kids Succeed - Waukesha**  
Supports educators, increases student achievement, and enhances family stability and empowerment in the School District of Waukesha's highest-need schools.

# ADVOCATE

# VOLUNTEER

## Initiatives We Lead

### NEW! Waukesha, Ozaukee, and Washington (WOW) Counties Partnership Schools

Allows for deeper investment in select schools with a higher than community average number of students and families living at or below the poverty line. Working directly with school staff to support the specific needs of that school. Past investments have included: mental health providers/support, technology, and social-emotional learning.

### Our first school: Hawthorne Elementary School in Waukesha.

We are committed to identifying and supporting additional Waukesha Partnership Schools, and at least one in each of Ozaukee and Washington counties.

## Community Coalitions, Collaborations, & Partnerships

MKE Civic Response Team: Early Childhood

## Time & Talent Contributions



Snack Packs

# ADVOCATE

# VOLUNTEER

## My Very Own Library

In partnership with University of Chicago, builds strong readers by providing free books and family engagement activities at 14 Milwaukee Public Schools.

## Community Coalitions, Collaborations, & Partnerships

Flamboyant Foundation Family Engagement Project  
Techquity Advisory Council

## Time & Talent Contributions



Build My Bookshelf-Waukesha



Mary Lou's Closet



My Very Own Library-Milwaukee

**97%** surveyed parents/caregivers from United Way-funded support for children and families programs improved communication with their children.

# ADVOCATE

# VOLUNTEER

## Community Coalitions, Collaborations, & Partnerships

Audubon Middle/High School - Academy of Information Technology Advisory Board  
GPS Education Partners Education & Youth Apprenticeship Advisory Committee  
Milwaukee Public Schools Partnership for the Arts & Humanities Advisory Cmte  
Milwaukee Community Schools Partnership  
MKE Civic Response Team: K-12 Education  
Waukesha County Business Alliance - Education Steering Committee  
"We Play Milwaukee" Collaborative

## Time & Talent Contributions



Backpack Coalition

**94%** of the children ages 6-11 who participated in United Way-funded youth development programs improved on being on track to go to the next grade level.

# 2021-22 INVESTMENTS IN FINANCIAL STABILITY

## GIVE



## FINANCIAL EMPOWERMENT FOR INDIVIDUALS & FAMILIES

Promoting financial stability and independence.

### Strategic Program Grants

Aurora Family Service – Center for Financial Wellness  
La Casa de Esperanza, Inc – Financial Stability  
YWCA Southeast Wisconsin – Personal Financial Management

**96%** of surveyed adults in Reducing Barriers to Employment programs gained job-specific credentials.

### Initiatives We Lead

#### Financial Empowerment for Women

Reduces barriers to employment and increases wealth for female heads of household.

#### Fund My Future Milwaukee (Children's Savings Accounts)

Raises children's expectations for their future by seeding an educational savings account starting in kindergarten for all Milwaukee students.

## GIVE



## REDUCING BARRIERS TO EMPLOYMENT

Building education credentials and skill certification to overcome barriers to employment.

### Strategic Program Grants

Easterseals Southeast Wisconsin – Supported Employment  
Grand Avenue Club, Inc. – Grand Avenue Club  
La Casa de Esperanza, Inc – Workforce Development  
Legal Aid Society of Milwaukee – Civil Division  
Literacy Services of Wisconsin, Inc. – Adult Education Program  
Lutheran Social Services of Wisconsin & Upper Michigan – Spring City Corner Clubhouse  
Milwaukee Urban League – MUL Employment Assistance

NAMI Southeast Wisconsin – Court Support & Advocacy  
New Concept Self Development Center Inc. – Fathers' Resource & Employment Center  
Portal Inc. – Employment Readiness and Advancement  
Wisconsin Community Services, Inc. – Community Reintegration Services, Driver's License Recovery  
Women's Center, Inc., The – Employment  
YWCA Southeast Wisconsin – Community Adult Learning Lab

### Initiatives We Lead

#### Reducing Barriers to Employment & Advancement

Decreases the unemployment rate among African Americans through increased training, credentialing, transportation, expungement, and diverse talent retention.

## GIVE



## SAFE & STABLE HOMES

Ensuring individuals and families have safe and affordable permanent housing.

### Strategic Program Grants

Advocates of Ozaukee, Inc. – Domestic Violence  
American Red Cross in Southeastern Wisconsin – Home Fire Preparedness Program, Disaster Cycle Services  
Bay View Community Center, Inc. – Food Pantry  
Cathedral Center, Inc., The – Emergency Shelter  
Catholic Charities of the Archdiocese of Milwaukee, Inc. – In Home Support & Hoarding Intervention  
Community Advocates, Inc. – Emergency Support/Advocacy Continuum, Family Support Center Emergency Shelter, Homeless Outreach Nursing Center  
Friedens Community Ministries, Inc. – Emergency Food Pantry  
FRIENDS, Inc. – Opening Doors  
Guest House of Milwaukee, Inc. – Emergency Shelter  
Hebron Housing Services – Emergency Shelter, Jeremy House  
Housing Resources, Inc. – Post Purchase Counseling

Milwaukee Christian Center, Inc. – Emergency Food Pantry  
Milwaukee Women's Center, Inc., The – Emergency Shelter  
Pathfinders – Pathfinders Youth Shelter, Supported Housing  
Salvation Army - Waukesha – Emergency Lodge, Family Services, Food Security  
Salvation Army, The - Wisconsin & Upper Michigan – Emergency Lodge  
Silver Spring Neighborhood Center, Inc. – Community Food Bank  
Sojourner Family Peace Center, Inc. – Emergency Shelter  
Vivent Health – Food Pantry  
Walker's Point Youth & Family Center, Inc. – Runaway Services  
Women's Center, Inc., The – Transitional Living & Domestic Violence Program

### Initiatives We Lead

#### Safe & Stable Homes

Aims to end family homelessness by 2023 through prevention and intervention.



# ADVOCATE

## Community Coalitions, Collaborations, & Partnerships

Alliance for Economic Inclusion  
Bank On Greater Milwaukee Coalition  
Financial Literacy in Communities of Color  
MKE Civic Response Team: Economic Recovery  
after Financial Literacy in Communities of Color  
MKE Elevate - Economic Security Action Team  
Nonprofit Management Fund  
Urban Economic Development Association of WI  
WI Policy Forum Economic Development Committee

# VOLUNTEER

## Time & Talent Contributions



Financial Empowerment  
Seminars



Volunteer Income  
Tax Assistance



Holiday Giving Tree

# ADVOCATE

## Community Coalitions, Collaborations, & Partnerships

Boys and Men of Color Week  
Milwaukee Reentry Council  
Black Male Achievement Advisory Council (BMAAC)  
Milwaukee Area Workforce Funding Alliance Board  
MPS Drive Advisory Council  
UWM- Black Male Summit (annual)

# VOLUNTEER

## Time & Talent Contributions



Job Seeker Notes  
of Encouragement



MLK Days of Service



Men's Job  
Seminar Series



Women's Job  
Seminar Series

# ADVOCATE

## Community Coalitions, Collaborations, & Partnerships

Community Advocates Healthy Housing Initiative's Advisory Committee  
Emergency Food & Shelter Board Milwaukee  
Emergency Food & Shelter Board Waukesha  
Fundors Together to End Homelessness Community of Practice  
Housing Action Coalition of Waukesha County  
Milwaukee Continuum of Care - Coordinated Entry Leadership  
Milwaukee Continuum of Care - Executive Board  
Milwaukee Homelessness Awareness Week  
MKE Civic Response Team: Food  
MKE Civic Response Team: Housing & Shelter  
Safe & Stable Homes Advisory Council  
UEDA, Tenant & Landlord Resource Center Executive Committee  
Warming Room Planning Committee

# VOLUNTEER

## Time & Talent Contributions



Emergency Food Kits



Personal Care Kits



House & Home Kits



Project Homeless  
Connect - Milwaukee



Laundry Kits



Project Homeless  
Connect - Waukesha

# PARTNER AGENCIES

Below are the 2021–22 agency program partners and the focus areas that United Way invests in. Learn more about these programs and United Way's special initiatives at [UnitedWayGMWC.org/Our-Impact](https://UnitedWayGMWC.org/Our-Impact).

■ Health ■ Education ■ Financial Stability

## Agency Program Partners HEF

Agency Name	Health	Education	Financial Stability
Adaptive Community Approach Program (ACAP)	■		
Advocates of Ozaukee			■
American Red Cross in Southeastern Wisconsin			■
Ascension Seton Dental Clinic	■		
Aurora at Home	■		
Aurora Family Service	■	■	■
Aurora Healing Center on Bruce Street	■		
Bay View Community Center		■	■
Big Brothers Big Sisters of Metropolitan Milwaukee		■	
Big Brothers Big Sisters of Ozaukee County		■	
Boy Scouts of America, Potawatomi Area Council		■	
Boy Scouts of America, Three Harbors Council		■	
Boys & Girls Clubs of Greater Milwaukee		■	
Bread of Healing Clinic	■		
The Cathedral Center			■
Catholic Charities of the Archdiocese of Milwaukee	■	■	■
Centro Legal	■		
Children's Wisconsin	■	■	
City Year		■	
COA Youth & Family Centers		■	
Community Advocates			■
Community Outpatient Health Service	■		
Community Smiles Dental	■		
Curative Care Network	■	■	
Diverse and Resilient	■		
Easterseals Southeast Wisconsin	■	■	■
Eras Senior Network	■		
Family Service of Waukesha	■	■	
Friedens Community Ministries			■
FRIENDS			■
Girl Scouts of Wisconsin Southeast		■	
GPS Education Partners		■	
Grand Avenue Club			■
Guest House of Milwaukee			■
Harry & Rose Samson Family Jewish Community Center	■		
HEAR Wisconsin		■	
Hebron Housing Services			■
Housing Resources			■
IMPACT	■		
IndependenceFirst	■		
Jewish Family Services	■		
La Casa de Esperanza		■	■

## Agency Program Partners HEF

Agency Name	Health	Education	Financial Stability
La Causa		■	
Legal Aid Society of Milwaukee			■
Literacy Services of Wisconsin			■
Lutheran Social Services of Wisconsin & Upper Michigan			■
Mental Health America of Wisconsin	■		
Meta House	■		
Milwaukee Christian Center	■	■	■
Milwaukee LGBT Community Center		■	
Milwaukee Urban League		■	■
The Milwaukee Women's Center	■		■
NAMI Southeast Wisconsin			■
Neighborhood House of Milwaukee		■	
New Concept Self Development Center		■	■
Next Door		■	
Ozaukee Family Services	■		
The Parenting Network		■	
Parents Place		■	
Pathfinders	■		■
PEARLS for Teen Girls	■		
Penfield Children's Center	■		
Portal			■
The Salvation Army – Waukesha County			■
The Salvation Army – Wisconsin & Upper Michigan			■
Silver Spring Neighborhood Center		■	■
Sixteenth Street Community Health Center	■		
Sojourner Family Peace Center	■		■
St. Joseph Academy		■	
United Community Center	■	■	
Vision Forward Association	■		
Vivent Health	■		■
Walker's Point Youth & Family Center			■
Waukesha Free Clinic	■		
Wisconsin Community Services	■	■	■
The Women's Center	■	■	■
YMCA at Pabst Farms	■		
YMCA of Greater Waukesha County		■	
YMCA of Metropolitan Milwaukee		■	
YWCA Southeast Wisconsin			■

To see a listing of the number of people helped per county, see page 4.