

THE CHANGE WE'RE MAKING

Marissa
Milwaukee

LIVE UNITED

THANK YOU
TO OUR PRINT SPONSOR



Northwestern Mutual®

United
Way



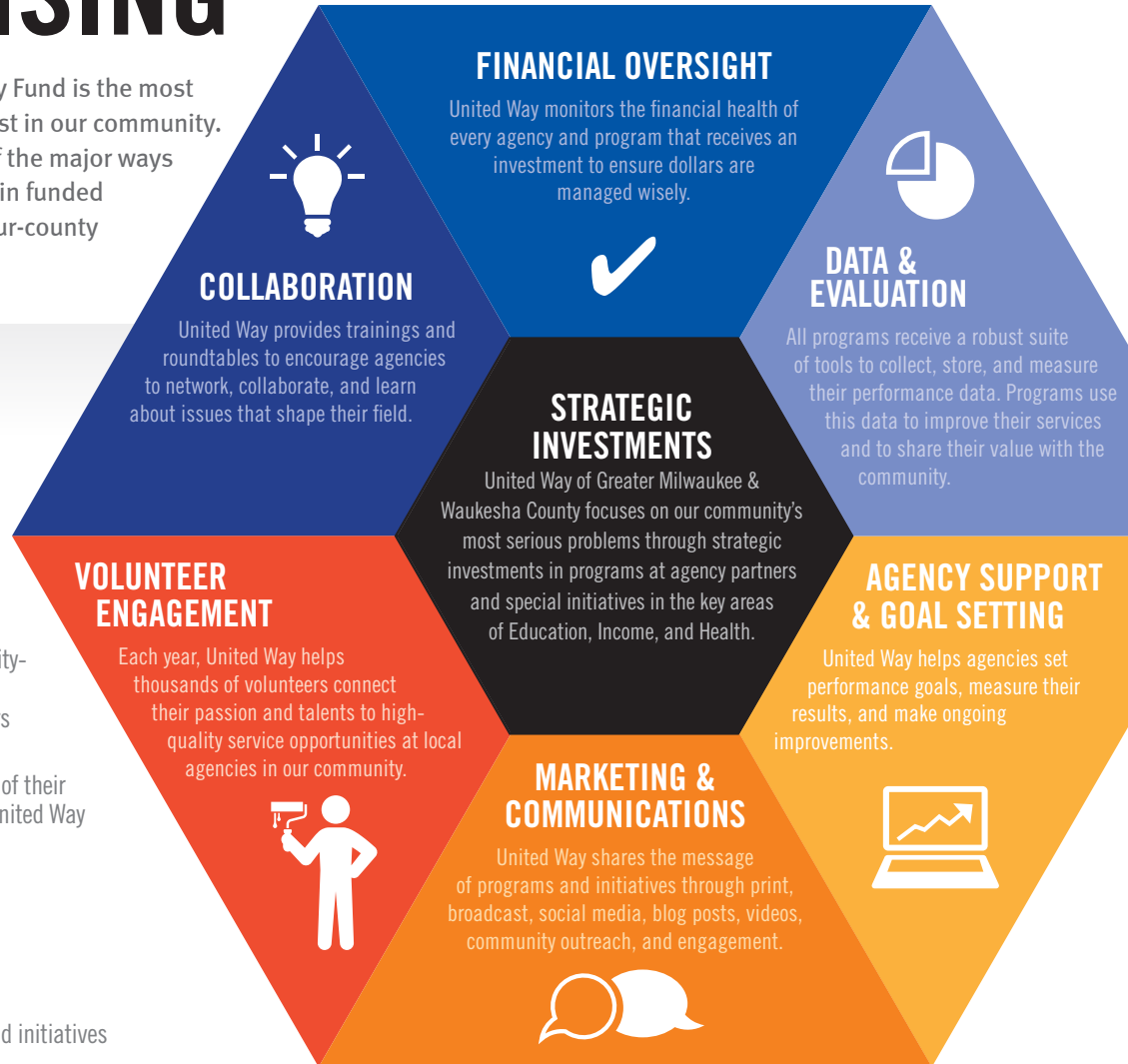
2016 COMMUNITY IMPACT REPORT

WE GO WAY BEYOND FUNDRAISING

Giving to United Way's Community Fund is the most efficient and powerful way to invest in our community. The chart to the right lists a few of the major ways United Way makes an investment in funded programs and initiatives in our four-county region.

HOW WE INVEST IN OUR COMMUNITY

- 50%** Program allocations, community-wide initiatives and building capacity of our agency partners
- 44%** Directed by donors to charities of their choice as part of their gift to United Way
- 4%** Community Problem Solving
- 1%** Volunteer Engagement
- 1%** Multi-partner collaborations and initiatives



VOLUNTEERISM

United Way connects people to quality opportunities to serve, builds capacity for local volunteering, and mobilizes volunteers to effectively and efficiently meet local needs.

9340+ VOLUNTEERS

**OVER
440
IMPACTING
111**

GROUP
PROJECTS

AGENCIES
AND SCHOOLS



OUR FOCUS AREAS

FUNDED BY
DONATIONS TO THE



EDUCATION

Helping Children & Youth Achieve
Their Potential

MORE ON
PAGE 4

GOALS INCREASE THE NUMBER OF CHILDREN WHO:

- Enter school ready to succeed
- Read proficiently by third grade
- Are on track to be promoted to the next grade level
- Display improved cognitive, social, and/or physical skills
- Graduate from high school on time
- Are prepared for success in college, work and life

INCOME

Promoting Financial Stability
& Independence

MORE ON
PAGE 8

GOALS INCREASE THE NUMBER OF ADULTS & FAMILIES WHO:

- Are able to meet their basic needs
- Gain educational and/or training skills to secure and maintain employment that offers a family sustaining wage
- Have access to culturally appropriate relocation and reunification services as immigrants or refugees
- Have access to high quality, free or low cost legal services
- Save for and build assets like a home or postsecondary education

HEALTH

Improving People's
Health & Safety

MORE ON
PAGE 12

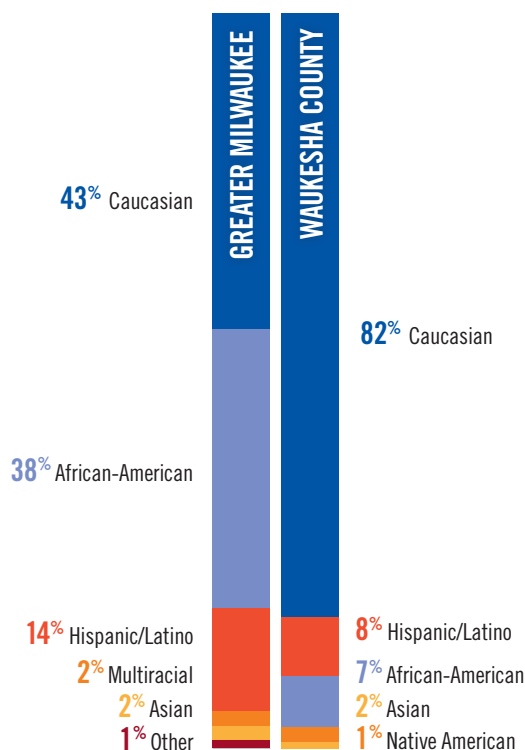
GOALS INCREASE THE NUMBER OF ADULTS & FAMILIES WHO:

- Are able to live independently and with dignity
- Have access to high quality and affordable mental, behavioral, dental, and general health care services
- Have access to prevention education and can avoid risky behaviors
- Have a network of support for children with disabilities, their families, and caregivers
- Have access to high quality, affordable prenatal care and pregnancy support services
- Are healthy and safe

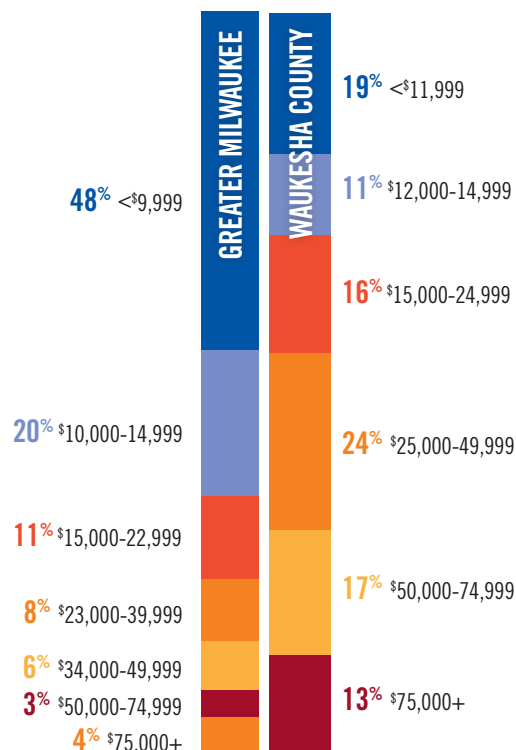
WHO YOU'RE HELPING

Due to the recent merger of United Way of Greater Milwaukee & Waukesha County, data for 2014-15 was collected separately. Combined outcomes will be available in late 2016.

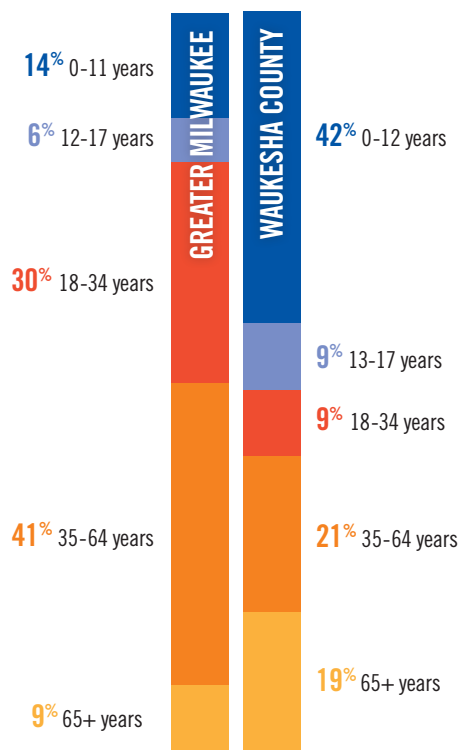
ETHNICITY



INCOME



AGE



OUR WORK IN EDUCATION

Education is the cornerstone of individual and community success. Strong, productive communities are dependent upon a skilled workforce that can compete in a global economy. It is critical to reach children early—even before they start school. Once a young person falls behind it can be very difficult to catch up.

Parents who have support from early on can build great futures for their children. United Way is working with schools, parents, and organizations to ensure that every child has a chance for success in school, work, and life by investing in programs that produce results.

United Way of Greater Milwaukee & Waukesha County focuses on supportive communities, effective schools, and strong families. Tackling the education challenge requires reframing education on a cradle-to-career continuum.

In 2016-17, United Way will invest in 48 Education programs, listed to the right under the issue areas they address.

Visit UnitedWayGMWC.org/Education for more outcomes.



\$8,954,896

2016-17 INVESTMENTS IN EDUCATION

EARLY CHILDHOOD EDUCATION

Aims to increase the number of children who enter school ready to succeed.

FACT Success in life begins with a strong foundation in health, social-emotional skills, and cognitive development. Unfortunately, by eight years old, many children – especially those living in families that are struggling financially – have not met the developmental milestones that are essential for future success in school and life.



Of the children who participated in United Way-funded early childhood education programs in 2014-15:

83%

improved their literacy skills

Of the children that participated in United Way-funded YMCA of Central Waukesha County, Inc.'s Early Childhood Education program:

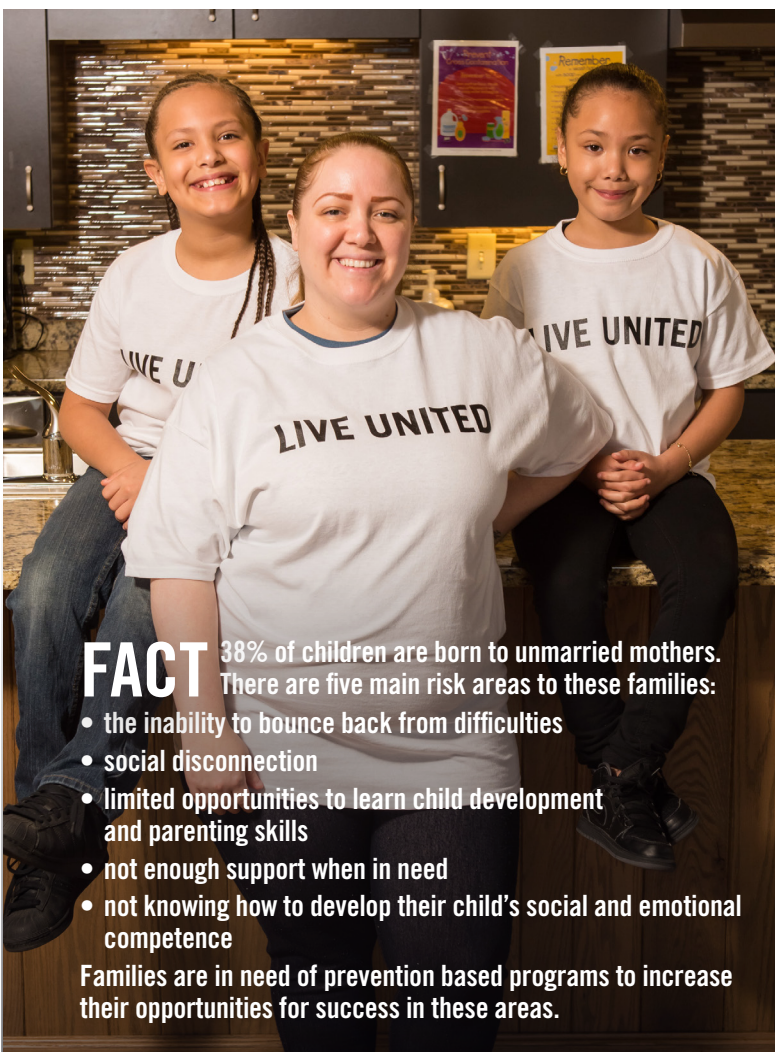
83%

improved listening skills and listening without interrupting others

- Boys & Girls Clubs of Greater Milwaukee, Inc - SPARK Early Literacy Program
- COA Youth & Family Centers - Early Childhood Education
- LaCausa, Inc. - Early Education and Care Center
- Neighborhood House of Milwaukee - Early Childhood Education
- Silver Spring Neighborhood Center, Inc - Elaine Schreiber Child Development Center
- St. Joseph Academy - Child Development Center of St. Joseph
- United Community Center, Inc - Before & After School
- YMCA at Pabst Farms - Day Care
- YMCA of Greater Waukesha County - Early Childhood Education
- YMCA of Metropolitan Milwaukee, Inc - Early Childhood Education

SUPPORT FOR CHILDREN & FAMILIES

Supports success within the family unit and improved cognitive, social, and/or physical skills among children.



FACT 38% of children are born to unmarried mothers. There are five main risk areas to these families:

- the inability to bounce back from difficulties
- social disconnection
- limited opportunities to learn child development and parenting skills
- not enough support when in need
- not knowing how to develop their child's social and emotional competence

Families are in need of prevention based programs to increase their opportunities for success in these areas.

Of the parents/caregivers who participated in United Way-funded support for children and families programs in 2014-15:

92%

increased their positive interactions with family and friends

- Aurora Family Service, Inc. - Family Enrichment
- Bay View Community Center, Inc. - Family and Children
- Catholic Charities of the Archdiocese of Milwaukee, Inc. - Supported Parenting Program - Waukesha County
- Children's Hospital of Wisconsin, Community Services - Volunteer Respite Care
- COA Youth & Family Centers - Home Instruction for Parents of Preschool Children (HIPPPY)
- Curative Care Network, Inc. - Outpatient Therapy Services
- Easter Seals Southeast Wisconsin - Safe Babies Healthy Families Case Management
- Family Service of Waukesha - Cooperative Parenting Center
- HEAR Wisconsin, Inc. - Language Access Services
- La Causa, Inc. - Crisis Nursery and Respite Center
- New Concept Self Development Center Inc. - MLK Social Service
- The Parenting Network, Inc. - Parenting Education & Support Services
- Parents Place, Inc. - Community Education, Supervised Visitation
- The Women's Center, Inc. - Child Abuse Prevention

YOUTH DEVELOPMENT

Focuses on increasing the number of children who read proficiently by third grade, are on track to advance to the next grade level, develop resistance skills, increase school engagement, have goals and aspirations, graduate high school on time, and are prepared for success in college, work, and life.

FACT Low academic achievement correlates to low graduation rates and predicts other negative outcomes e.g. teen pregnancy, crime, and unemployment. Third-graders who lack proficiency in reading are four times more likely to become high school dropouts. Only 62% of Milwaukee Public School students graduate in four years, while 1,883 dropped out entirely.



Of the children ages 6-8 who participated in United Way-funded youth development programs in 2014-15:

95%

improved on believing that it matters to do well in school

- Big Brothers Big Sisters of Metropolitan Milwaukee, Inc. - One to One Mentoring Program
- Big Brothers Big Sisters of Ozaukee County Inc. - MATCH ME
- Boy Scouts of America, Potawatomi Area Council - Cub Scouts
- Boy Scouts of America, Three Harbors Council - Learning for Life
- Boys & Girls Clubs of Greater Milwaukee - School Achievement, Sponsor-A-Scholar
- City Year, Inc. - Whole School Whole Child
- COA Youth & Family Centers - Youth & Family Program
- Girl Scouts of Wisconsin Southeast, Inc. - Leadership & Critical Life Skills Development for Girls
- La Casa de Esperanza, Inc. - Children & Youth
- Milwaukee Christian Center, Inc. - Youth Development Program
- Milwaukee LGBT Community Center - Project Q Health & Wellness
- Milwaukee Urban League - Campaign for Academic Achievement
- Neighborhood House of Milwaukee, Inc. - University Kids Club
- S.E.T. Ministry, Inc. - PEACE Program
- Silver Spring Neighborhood Center, Inc. - Youth Social Development
- United Community Center, Inc. - After School Achievement, Youth Empowered to Succeed
- YMCA at Pabst Farms - Youth & Community
- YMCA of Greater Waukesha County - Day Camp
- YMCA of Metropolitan Milwaukee, Inc. - Camp FLY

EDUCATION PROGRAMS & COLLABORATIONS

INITIATIVES WE LEAD

HELPING KIDS SUCCEED

Student achievement and personal development are closely tied to positive parental involvement. United Way invests in parental engagement in Waukesha County that helps students succeed by improving school attendance, grades, and their ability to graduate on time through the following programs:

- GPS Education Partners, Inc - Parent Engagement Program
- Wisconsin Community Services, Inc - Agree to Succeed Attendance Program



Of the students who participated in United Way-funded helping kids succeed programs:

86%

improved their grades

READERS UNITED

In the State of Wisconsin 67% of youth do not read at a proficient level. Readers United is a year-round initiative to promote literacy. This initiative encompasses:

• EMERGING READERS

Launched by the United Way Emerging Leaders affinity group, Emerging Readers provides the opportunity to make a positive impact in the life of a local child by sharing the joy of reading. Participants are matched with a family or a child at a United Way partner agency and donate age-appropriate reading materials for their child or family four times a year.

This year, 242 local children were matched with 150 United Way donors. Children receiving books were between the ages of 2-13 and participated in youth programming at the following program partner agencies: Big Brothers Big Sisters of Greater Milwaukee, Boys and Girls Club of Greater Milwaukee, COA Youth & Family Centers, Parents Place, and the United Community Center.

• MY VERY OWN LIBRARY

In 2015-16 My Very Own Library, a literacy initiative dedicated to putting books into the hands of children in need, distributed 34,200 books to students in 10 MPS schools. Participating students in the chosen schools had the opportunity to select 10 new children's books over the course of three book fairs to create their own home library.

The schools selected were: Kluge; Auer Avenue School; Brown Street Academy; Hopkins Lloyd Community School; Jackson Early Childhood and Elementary School; Kagel School; Lancaster School; James Whitcomb Riley School; Townsend Street School; and Clement J. Zablocki School.

• SUMMER READING PARTNERSHIP

Over the summer, children can lose two to three months of reading skills learned during the school year – often called summer slide. The summer reading partnership wants every child to have fun reading age-appropriate books, alone or with their parents and will distribute more than 70,000 new, free books to local children this summer.



SUMMER READING PROGRAM

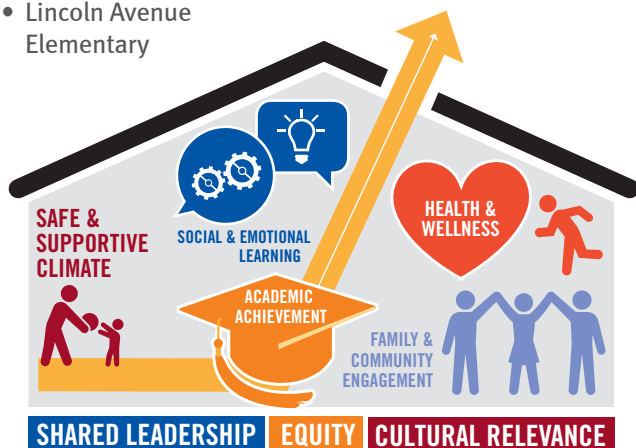
You can support any of our initiatives by donating directly to United Way's Community Fund.

MILWAUKEE COMMUNITY SCHOOLS PARTNERSHIP

Milwaukee Community Schools Partnership is a collective strategy to transform schools into a place where students, families, staff, and the surrounding community can work together to ensure every student is successful. Our strategy places the focus on the whole child by providing academic supports, social & emotional learning, health & wellness, family & community engagement, and a safe and supportive climate.

In partnership with Milwaukee Public Schools, United Way is currently working with six schools:

- Auer Avenue Community School
- Bradley Tech High School
- Browning Elementary
- Hopkins Lloyd Community School
- James Madison Academic Campus
- Lincoln Avenue Elementary



Each Community School may use different strategies and activities to improve its school and community, but each share these guiding principles:

- **Shared Leadership** that engages multiple voices in decision-making and implementation. A full-time Community School Coordinator that supports continuous communication between all stakeholders in the development of a strategic plan.
- A focus on **Equity** to ensure all activities are fair and just so that all can participate, prosper, and reach their full potential.
- **Cultural Relevance** that builds on the assets of the entire community and responds to the self-identities of students, families, school staff, and community members.

WHERE WE HELP

MILWAUKEE SUCCEEDS

As a founding partner in Milwaukee Succeeds – a community-wide initiative to ensure there is a strong education pipeline from cradle to career for all children – United Way is leading three groups to implement strategies to increase the:

- Number of children enrolled in high quality early childcare programs in our community from 1,500 children in 2013 to 3,000 by 2020.
- Level of parental awareness of their young children's needs for healthy development by ensuring access to developmental screenings and the support of parents as the experts of their children.
- Number of children immunized to ensure the overall health of Milwaukee children by educating parents and expectant parents about the importance of preventive health care on children's long-term success.



COMMUNITY COALITIONS, COLLABORATIONS & PARTNERSHIPS:

- Children and Family Support Advisory Committee - Waukesha
- First Stage Theatre in Education Committee
- Greater Milwaukee Committee – Education Committee
- Immunize Milwaukee
- School Readiness Philanthropy Group



OUR WORK IN INCOME

Our community will only prosper and grow if all families are financially stable. Fewer financial stresses lead to healthier lives, improved work performance, and better education outcomes. United Way invests in programs that help adults improve their education level and create a more financially secure future for themselves and their families. United Way's work in Income is focused on ensuring all families and individuals achieve independence, dignity of employment, and financial stability.

In 2016-17, United Way will invest in 47 Income programs, listed to the right under the issue areas they address.

Visit UnitedWayGMWC.org/Income for more outcomes.



\$4,153,426
2016-17 INVESTMENTS IN INCOME

ADULT LEARNING

Increases enrollment in and completion of literacy certification, training and degree programs.



FACT 16% of individuals 18-24 have less than a high school education. Individuals 25 and older whose poverty status is determined by education attainment and have less than a high school diploma is 34%.

Of the adults who utilized United Way-funded adult learning programs in 2014-15:

99%

made progress towards academic goals

- Literacy Services of Wisconsin, Inc. - Adult Education Program
- Next Door - Skills Building & GED Fast Track Program
- YWCA Southeast Wisconsin - Community Adult Learning Lab

EMERGENCY SHELTER ADULTS & FAMILIES

Provides the most basic needs including food, shelter, clothing, and hygiene items in emergency situations.

- Cathedral Center, Inc. - Emergency Shelter
- Community Advocates, Inc. - Family Support Center, Homeless Outreach Nursing Center
- Guest House of Milwaukee, Inc. - Emergency Shelter
- Hebron House of Hospitality, Inc. - Emergency Shelter, Jeremy House
- The Salvation Army - Waukesha - Emergency Lodge, Family Services
- The Salvation Army - Wisconsin & Upper Michigan - Emergency Lodge

FINANCIAL LITERACY

Increases financial management knowledge and skills among low-income working families.

- YWCA Southeast Wisconsin - Ways to Work

FOOD SECURITY ACCESS TO AFFORDABLE & HEALTHY FOOD

Ensures youth and adults have access to healthy meals and fresh produce in areas where fresh food is scarce.

- The Caring Place, Inc. - Meals on Wheels
- Fondy Food Center, Inc. - Fondy Farmer's Market
- The Salvation Army - Waukesha - Meal Program

FOOD SECURITY: EMERGENCY FOOD

Provides food to low-income individuals and families on an emergency basis, allowing them to use money saved on food to meet other basic needs such as rent and utilities.



FACT One in four people in Milwaukee are living in poverty. Jobs that offer family sustaining wages are difficult to find. Most adults living below the poverty line have at least one job, but the working poor struggle to pay all monthly bills and have enough money left to purchase food. 11.4 % of households are considered to be food insecure. Many need to turn to emergency food pantries to get help.

Of the adults and families who utilized United Way-funded emergency food programs in 2014-15:

87%

- AIDS Resource Center of Wisconsin, Inc. - Food Pantry
- Bay View Community Center, Inc. - Food Pantry
- Friedens Community Ministries, Inc. - Emergency Food Pantry
- Milwaukee Christian Center, Inc. - Emergency Food Pantry
- Silver Spring Neighborhood Center, Inc. - Community Food Bank

felt their family's 3-5 day emergency food needs were met

HOUSING & HOME OWNERSHIP

Connects low-income working families with affordable housing and prevents families from losing affordable housing.

- Community Advocates, Inc. - Emergency Support/Advocacy Continuum
- Hebron House of Hospitality, Inc. - Housing Assistance
- Housing Resources, Inc. - Post Purchase Counseling
- Pathfinders - Q-BLOK

IMMIGRATION & REFUGEE SERVICES

Assists individuals through the entire immigration and resettlement process by providing accurate and up-to-date immigration information, educational programs, legal representation, case management, and appropriate referrals.

- Council for the Spanish Speaking, Inc. - Bilingual Immigration Services
- International Institute of Wisconsin - Immigration and Citizenship Services

LEGAL AID

Provides free to moderately-priced legal services to vulnerable residents.

- Legal Aid Society of Milwaukee - Civil Division

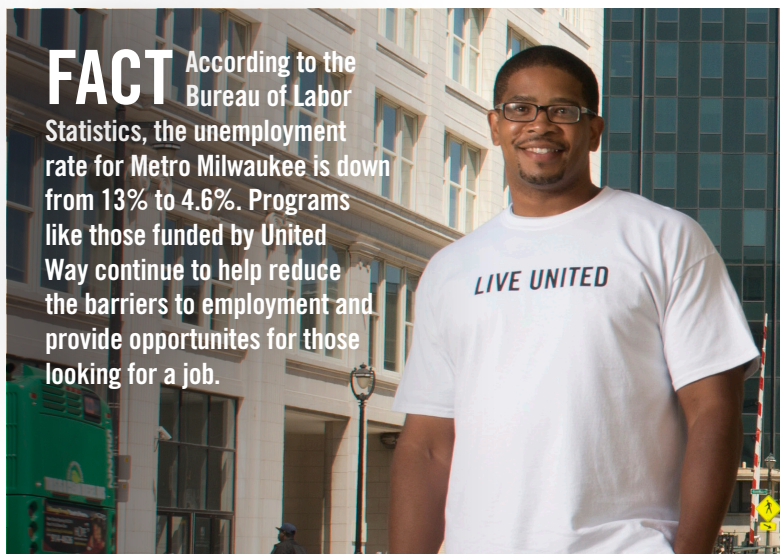
OLDER ADULT SUPPORT & INDEPENDENCE

Increases the number of older adults who are able to live independently and with dignity.

- Aurora Family Service, Inc. - Elder Service Money Management
- Catholic Charities of the Archdiocese of Milwaukee, Inc. - In-Home Support Program - Waukesha County, In Home Support Services - Milwaukee County
- Interfaith Older Adult Programs, Inc. - Family Caregiver Support Network

REDUCING BARRIERS TO EMPLOYMENT

Provides training or educational programs that have direct links to permanent or transitional employment and connects earners in low-income working families with affordable and effective basic education to increase reading, math, comprehension, and work-related skills.



FACT According to the Bureau of Labor Statistics, the unemployment rate for Metro Milwaukee is down from 13% to 4.6%. Programs like those funded by United Way continue to help reduce the barriers to employment and provide opportunities for those looking for a job.

Of the individuals that participated in United Way-funded reducing barriers to employment programs in 2014-2015:

81%

- Easter Seals Southeastern Wisconsin - Supported Employment, Training
- Grand Avenue Club, Inc. - Grand Avenue Club
- Interfaith Older Adult Programs, Inc. - Employment
- La Casa de Esperanza, Inc. - Workforce Development
- Milwaukee Urban League - MUL Employment Assistance
- Portal Inc. - Employment Readiness and Advancement
- The Salvation Army - Wisconsin & Upper Michigan - Employment Assistance
- Wisconsin Community Services, Inc. - Community Reintegration Services, Driver's License Recovery
- The Women's Center, Inc. - Employment

achieved/gained job-specific credentials

TRANSPORTATION

Assists individuals who cannot drive, do not own a car, cannot afford to repair their car, or otherwise have no transportation and face significant barriers when accessing services for health, employment, and self-sufficiency.

- Interfaith Senior Programs, Inc. - Find a Ride Waukesha County

VOLUNTEER RECRUITMENT

Harnesses the influence and resources of volunteers to support community investments and nonprofits.

- Nonprofit Center of Milwaukee Inc. - Volunteer Milwaukee
- Volunteer Center of Ozaukee County - Volunteer Development

INCOME PROGRAMS & COLLABORATIONS

INITIATIVES WE LEAD

Financial Stability Initiative

The inability for many of Waukesha County's citizens to meet their basic needs affects the entire community. 16.4% of the population is considered low income or working poor. United Way is addressing this issue by focusing on teaching families and individuals who are struggling to meet their basic needs the skills needed to increase income, build savings, and gain assets through the following program:

- La Casa de Esperanza, Inc - Financial Stability Program

To ensure we address this issue, United Way funds strategies that:

- Provide intensive one-on-one case management to teach budgeting skills and develop short- and long-term goals.
- Raise awareness of the importance of building and increasing savings and credit through financial literacy seminars, educational materials, and workshops.
- Increase employability and develop a dependable workforce utilizing career counselors and classroom training.
- Utilize learned skills to increase total income and acquire essentials, such as cars, homes, and insurance.

Individual Development Accounts

United Way's Individual Development Account Program (IDA) encourages and rewards savings towards a home or post-secondary education by matching participants' deposits.

Through a federal grant obtained by the Boys & Girls Clubs of Greater Milwaukee and funds raised by United Way, savings are matched \$4 to \$1 for first-time low-income home buyers, and \$6 to \$1 for post-secondary education. Participants must also take part in financial counseling classes in order to enroll in the program.

Continuum Of Care Coordinated Entry

United Way is the lead agency for the Continuum of Care Coordinated Entry Workgroup and surrounding efforts. The workgroup is responsible for designing a new coordinated entry (CE) system to improve effective access to homelessness prevention, shelter diversion, community case management, emergency shelter, transitional housing, and other services to support housing stability.



Of the individuals who participated in United Way-funded financial stability programs:

99%

increased their budgeting skills



You can support any of our initiatives by donating directly to United Way's Community Fund.

Technical Assistance and Agency Support

United Way monitors the financial health of its programs, helps them set performance goals, measure their results and make ongoing improvements. Additionally, we provide specialized support in the areas of IT and governance:

IT United

IT United members are information technology professionals who provide skill-based volunteering and services to United Way Program Partner Agencies. Services are provided by IT companies and executed by their staff.

IT support and services include:

- One-time and ongoing IT projects for agency partners
- Career fairs and educational opportunities for students



Project LEAD

In our four-county region, too many people are left out of our public conversations. United Way of Greater Milwaukee & Waukesha County is changing this with Project LEAD—Leadership Effectiveness And Diversity.

This in-depth six-week training program prepares community members for leadership roles on nonprofit boards and committees, with an emphasis on recruiting participants from underrepresented board populations (women, racially and ethnically diverse, young professionals).

Priority for post-training placement on boards is given to United Way partner agencies.

WHERE WE HELP

Black Male Achievement

United Way has partnered with and sits on the Black Male Achievement Advisory Council (BMAAC) with the City of Milwaukee. The vision is to live in a Milwaukee that is more desirable place for you and your family to grow up, work, play, and live out your very best future. Milwaukee will be a place where you are able to live with a sense of dignity, purpose, and infinite potential. Our city will be a place where boys and men of color feel connected, appreciated, and supported. We will achieve this vision when boys and men are equally represented, participated fully, and actively shaping Milwaukee's economic, social, cultural, and political opportunities.

Project Homeless Connect

Project Homeless Connect has a simple mission to provide services and resources to homeless individuals and families. Beyond the need for safe and secure places to sleep, these individuals need a variety of other necessities in order to obtain the goal of permanent housing and sustainability. In 2015, over 500 individuals were provided services and resources at the event.

Thriving Waukesha

Thriving Waukesha focuses on building a thriving community by supporting collaborative efforts and mobilizing resources for the human service needs of all who call Waukesha County home.



Community Coalitions, Collaborations & Partnerships:

- Continuum of Care – Milwaukee & Waukesha
- Emergency Food & Shelter Board – Milwaukee, Ozaukee & Waukesha Counties
- Milwaukee Area Workforce Funding Alliance
- Milwaukee County Commission on Aging – Advisory Council
- Milwaukee Farmers Market Connection
- Milwaukee Food Council
- Milwaukee Housing Consortium/Take Root Milwaukee
- Milwaukee Transitional Jobs Collaborative
- Nonprofit Management Fund
- Thriving Waukesha – Steering Committee, Funders Committee & Transportation Workgroup
- Waukesha County Business Alliance
- Waukesha County Nutrition Coalition
- Waukesha Housing Action Coalition – Steering Committee & Transition Team

OUR WORK IN HEALTH

Health of individuals is a strong indicator of the health of a community. Achieving and maintaining good health is important during all stages of life, from conception through childhood, into adulthood through older age. To improve the health of our community we must all become more aware of health risks, starting from before birth. Whether it is a teen struggling to make the right decision, a senior in need of home health care, or a survivor of abuse seeking a safer environment; United Way is working to improve the quality of life for all.

United Way partners with agencies to provide help to those without health insurance, seniors in need of home health care, survivors of abuse, and individuals struggling with mental illness or addiction.

In 2016-17 United Way will invest in 88 programs listed, to the right under the issue areas they address.

Visit UnitedWayGMWC.org/Health for more outcomes.



\$13,246,988

2016-17 INVESTMENTS IN HEALTH

ASSESSMENT, REFERRAL & SUPPORT

Provides access to community services such as shelter, food, housing, and mental health care.

- Catholic Charities of the Archdiocese of Milwaukee, Inc - Outreach and Case Management - Waukesha County, Outreach Services - Milwaukee County
- COPE Services, Inc. - COPE Hotline
- IMPACT, Inc. - Assessment and Referral, IMPACT 2-1-1
- Mental Health America of Wisconsin, Inc. - Mental Health Access
- The Parenting Network, Inc. - Parent Helpline
- Stillwater's Cancer Support Services - Cancer Support Services

BEHAVIORAL & MENTAL HEALTH CARE

Ensures access to high quality and affordable mental and behavioral health care.



FACT One in five adults in America experience a mental illness. Mental illness is the leading cause of disability, absenteeism and lost productivity in the workplace.

Of those who participated in United Way-funded behavioral and mental health programs in 2014-15:

90%

- Aurora Family Service, Inc. - Milwaukee Mental Health Consultants, Systemic Family Counseling
- Catholic Charities of the Archdiocese of Milwaukee, Inc. - Behavioral Health Services, Counseling - Waukesha County
- Children's Hospital of Wisconsin - Community Services - Counseling for Children and Families
- Family Service of Waukesha - Counseling
- The Healing Center - Counseling Program for Under-Served Survivors
- Jewish Family Services, Inc. - Individual & Family Counseling
- Lutheran Social Services of Wisconsin & Upper Michigan, Inc. - Counseling
- Mental Health America of Wisconsin, Inc. - Mental Health Advancement
- NAMI Waukesha Inc - Education/Information, Support program
- Ozaukee Family Services - Counseling Services
- Pathfinders - Clinical Services
- Penfield Children's Center - Behavioral Health Clinic
- Wisconsin Community Services, Inc. - Criminal Justice Intervention
- The Women's Center, Inc. - Sexual Abuse & Assault Counseling

Created a plan to manage their stress

CHEMICAL ABUSE & DEPENDENCY

Provides supportive services to youth and adults who have been diagnosed or self-report that they have substance abuse issues.

- Meta House, Inc. - Transitional Living

COMMUNITY WIDE SUPPORT

Assists individuals in navigating complex community services.

- Family Service of Waukesha - The C.A.R.E. Center
- Wisconsin Community Services, Inc. - Mediation and Restorative Justice Center

DISABILITIES SERVICES

Supports children and adults with disabilities as well as their families and caregivers.

- Adaptive Community Approach Program, Inc. (ACAP) - Community Orienteering
- ARCh (Association for the Rights of Citizens with handicaps) - Advocacy, Leisure Services
- Curative Care Network, Inc. - Adult Day Services
- Harry & Rose Samson Family Jewish Community Center - School Aged Special Needs-Shiluv, Special Needs-Chaverim
- IndependenceFirst, Inc. - Attendant Referral Program
- Jewish Family Services, Inc. - Care Management
- Lutheran Social Services of Wisconsin & Upper Michigan, Inc. - Spring City Corner Clubhouse
- Penfield Children's Center - Early Intervention/Parent Program
- Vision Forward Association, Inc. - Children's Services
- YMCA at Pabst Farms - Special Programs

EMERGENCY SHELTER YOUTH

Ensures that homeless, runaway, and throwaway youth are healthy, safe, and avoiding risky behaviors.

- Pathfinders - Pathfinders Youth Shelter
- Walker's Point Youth & Family Center, Inc. - Runaway Services

HEALTH CARE ACCESS

Increases the number of youth and adults that have access to high quality, affordable dental and general health care.

FACT Milwaukee County ranks 71 out of 72 Wisconsin counties in achieving good health outcomes. Still 125,000 individuals in SE Wisconsin were uninsured, 73,000 living in Milwaukee.



Of those that participated in United Way-funded health care access programs in 2014-15

97%

- AIDS Resource Center of Wisconsin, Inc. - Dental Clinic
- Aurora at Home - Aurora VNA Zilber Family Hospice, Home Health Services
- Bread of Healing Clinic, Inc. - Community Med Share
- Community Outpatient Health Service - Community Outreach Health Clinic
- St. Elizabeth Ann Seton Dental Clinic - Healthy Teeth for Children, Restorative Care
- St. Joseph's Medical Clinic - Medical Services
- Waukesha County Community Dental Clinic - Adult Dental Care Program

Felt they had ownership over their own care

HEALTH EDUCATION/PREVENTION

Provides medically accurate and evidence-based prevention education, case management, and programs so that youth and adults have the information needed to remain healthy and avoid risky behaviors.

- AIDS Resource Center of Wisconsin, Inc. - Lifepoint
- Alzheimer's Association - Awareness, Education and Support
- ARCh (Association for the Rights of Citizens with handicaps) - Prevention Awareness & Community Education (PACE)
- Diverse and Resilient, Inc. - End HIV
- Elevate, Inc. - Germantown Prevention
- New Concept Self Development Center Inc. - Each One Reach One
- Ozaukee Family Services - Prevention
- Starting Point of Ozaukee, Inc. - LEAD Program

INTIMATE PARTNER VIOLENCE AND SEXUAL ASSAULT

Ensures survivors are safe and healthy.

FACT Social, economic, cultural, religious, or legal issues often make it difficult for someone to leave an abusive relationship. Leaving the abusing partner is also the most dangerous time. Survivors leaving a violent situation will need support in some or all of the following areas: developing a safety plan, getting enrolled in healthcare and other benefits, financial planning and assistance, housing as well as emotional and social support.

Of the individuals who participated in United Way-funded intimate partner violence and sexual assault programs in 2014-2015:

97%

- Advocates of Ozaukee, Inc. - Domestic Violence
- Centro Legal - Domestic Abuse and Family Law Program
- Family Service of Waukesha - Center for the Prevention of Family Violence
- Friends of Abused Families, Inc. - Domestic Violence Project
- The Milwaukee Women's Center, Inc. - Emergency Shelter, Nevermore Batterers Treatment
- Sojourner Family Peace Center, Inc. - Beyond Abuse, Courthouse Advocacy, Domestic Abuse Victim Advocates, Emergency Shelter
- The Women's Center, Inc. - Transitional Living & Domestic Violence Program

Felt more confident in their decision making skills

LOCAL DISASTER RESPONSE

Provides services to individuals and families in the four-county region to prevent disasters as well as responding to disasters when they do occur.

- American Red Cross in Southeastern Wisconsin - Home Fire Preparedness Program, Local Disaster Response

OLDER ADULT SUPPORT & INDEPENDENCE

Increases the number of adults who are able to live independently and with dignity.

- Bay View Community Center, Inc. - 50+
- The Caring Place, Inc. - Adult Day Care
- Curative Care Network, Inc. - Senior Care Services
- Harry & Rose Samson Family Jewish Community Center - Older Adult Seniors
- Interfaith Older Adult Programs, Inc. - Neighborhood Outreach
- Interfaith Senior Programs, Inc. - Faith in Action, Retired and Senior Volunteer (RSVP), The Caregiver Connection
- Lutheran Social Services of Wisconsin & Upper Michigan, Inc. - Menomonee Falls Adult Day Program
- Milwaukee Christian Center, Inc. - Elderly Adult Support Services
- United Community Center, Inc - Elderly Program
- YMCA of Greater Waukesha County - Older Adults

PREGNANCY & PARENTING SUPPORT

Ensures youth and adults have access to high quality, affordable prenatal care and pregnancy support services.

- Catholic Charities of the Archdiocese of Milwaukee, Inc. - Pregnancy and Parenting Supportive Services
- Children's Hospital of Wisconsin - Community Services - Milwaukee Start Right
- Easter Seals Southeastern Wisconsin - Childbirth & Infant Preparation Services (SBHF)
- Sixteenth Street Community Health Center, Inc. - The Great Start Program

HEALTH PROGRAMS & COLLABORATIONS

INITIATIVES WE LEAD

HEALTHY BIRTH OUTCOMES INITIATIVE

United Way is taking the lead in promoting healthy birth outcomes in Milwaukee. Together with our partners, we are committed to helping reach the community-wide goal to reduce Milwaukee's overall infant mortality rate by 10% and the African American infant mortality rate by 15% by 2017.

To ensure we address the infant mortality crisis, United Way invests in programs focused on prematurity prevention. Focus areas have included maternal mental health and family support services, maternal alcohol and other drug abuse and/or focus on fatherhood engagement.



Of the Healthy Birth Outcomes Participants:

99%

Of participants were connected to a medical home

HEALTHY GIRLS INITIATIVE

One of United Way's key strategies in helping to reduce teen pregnancy and teen sexual violence for young people of all genders is the implementation of proven prevention and education programs through Healthy Girls Initiative. United Way has selected Making Proud Choices!, Reducing the Risk, Wise Guys and ¡Cuidate! as its signature curriculums. All four programs have been used successfully in Milwaukee and nationwide. By implementing the same programs throughout the community, United Way can accurately track progress and results through common outcomes and indicators, while also forming best practices.

Of the Healthy Girls Initiative participants:

- 90% demonstrated an increased understanding and awareness of sexual victimization.
- 82% demonstrated knowledge of the causes of pregnancy and pregnancy prevention.
- 89% demonstrated knowledge of sexually transmitted infections and how to prevent them.

MILWAUKEE LIFECOURSE INITIATIVE FOR HEALTHY FAMILIES COLLABORATIVE

United Way of Greater Milwaukee & Waukesha County was selected by the Wisconsin Partnership Program (WPP) at the University of Wisconsin School of Medicine and Public Health to lead its Lifecourse Initiative for Healthy Families (LIHF) in Milwaukee, allowing United Way to expand its efforts to reduce Milwaukee's infant mortality rate.

The Milwaukee LIHF Collaborative is dedicated to improving community conditions that support Healthy Birth Outcomes. It convenes diverse community stakeholders from affected communities, as well as businesses, nonprofit organizations, and the public sector to identify a shared agenda to prevent prematurity and reduce infant mortality rates in Milwaukee.

Milwaukee LIHF Collaborative has three interconnected strategies to reduce the infant mortality rate:

- Reduce poverty and environmental stress.
- Expand health care access over the life course of parents and children.
- Strengthen father involvement.

LIHF
Lifecourse Initiative
for Healthy Families
Milwaukee

You can support any of our initiatives by donating directly to United Way's Community Fund.

HEALTH IMPROVEMENT FUND

United Way, in collaboration with the Milwaukee Health Care Partnership, is working to provide more people with access to high quality medical, dental, and mental health services. By partnering with the Milwaukee health systems, we are making investments in the community's health by providing uncompensated care and prevention services to Milwaukee County's vulnerable populations.

TEEN PREGNANCY PREVENTION INITIATIVE

Teen pregnancy profoundly affects the lives of those involved while costing the community millions of dollars through direct care, ancillary services, and the overall drain on the workforce. Most alarming is the connection between Milwaukee's teen pregnancy epidemic and vicious, cyclical poverty. Since 2006, the Greater Milwaukee community has invested significant resources to aggressively combat what was then one of the worst teen birth rates in the nation. United Way convened a community-wide collaborative to bring the issue to the forefront of public attention and change the historically high rate of teen births.

Teen birth rates have dropped 54% in Milwaukee since 2006, surpassing the goal set by the United Way of Greater Milwaukee & Waukesha-led Teen Pregnancy Prevention Initiative in 2008. The goal was to reduce teen birth rates by 46% by 2015 – it was considered one of the most ambitious goals ever set in the nation. In 2013 the Teen Pregnancy Prevention Initiative announced another ambitious goal – to reduce the 2013 overall rate by another 50%, to 11.4 births per 1,000, by 2023. The initiative's success is attributed to an all-hands-on-deck approach adopted by the community, which has been honored nationally as a model for other cities.



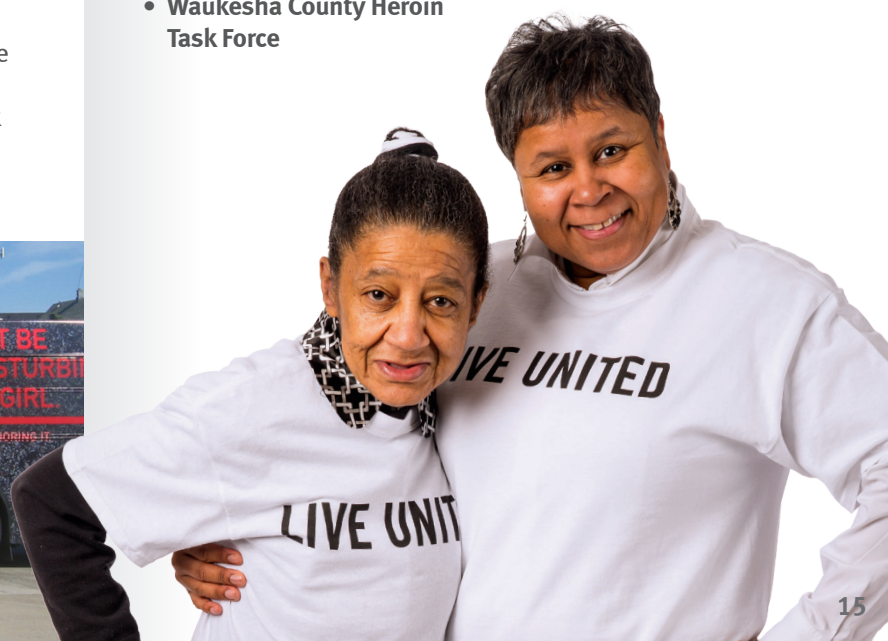
WHERE WE HELP

BOYS & GIRLS CLUBS OF GREATER MILWAUKEE TEEN PREGNANCY PREVENTION COLLABORATIVE PROJECT

The purpose of this program is to have a significant impact on reducing rates of teen pregnancy and existing disparities by replicating evidence-based teen pregnancy prevention programs to scale in communities with populations at greatest need. Boys & Girls Clubs and their partners will use funding from the Office on Adolescent Health to reach an estimated 13,000 youth ages 11-19 living in zip codes with the highest teen pregnancy rate over the next five years.

COMMUNITY COALITIONS, COLLABORATIONS & PARTNERSHIPS

- Community Advisory Committee – Boys and Girls Clubs Teen Pregnancy Prevention Collaborative
- Community Health Improvement Plan Process (CHIPPS) – Waukesha
- Drug Free Communities, Waukesha County
- Fetal Infant Mortality Review - Milwaukee
- Human Trafficking Task Force of Milwaukee
- Mental Health Task Force of Milwaukee
- Milwaukee Commission of Domestic Violence and Sexual Assault
- Milwaukee County Commission on Aging – Advisory Council
- Milwaukee Fatherhood Initiative
- Milwaukee Health Literacy Collaborative
- Milwaukee Homicide Review Commission
- Norris Adolescent Health Center – Community Advisory Committee
- PATCH (Providers and Teens Communicating for Health) - Milwaukee
- Waukesha County Heroin Task Force





WE ARE EFFECTIVE & TRUSTWORTHY

At United Way of Greater Milwaukee & Waukesha County we invest in programs that produce results at agencies that manage their money wisely. We have been recognized nationally and locally for our high rate of efficiency. In 2014, *Forbes* named United Way as one of five All-Star Charities for efficiency.

We invest nearly 90 cents of every dollar raised into community problem solving – and that far exceeds national standards.



**Greater Milwaukee
& Waukesha County**